

Z4531

TEXTRON PROWLER PRO Direct-Fit Hidden Cab Heater

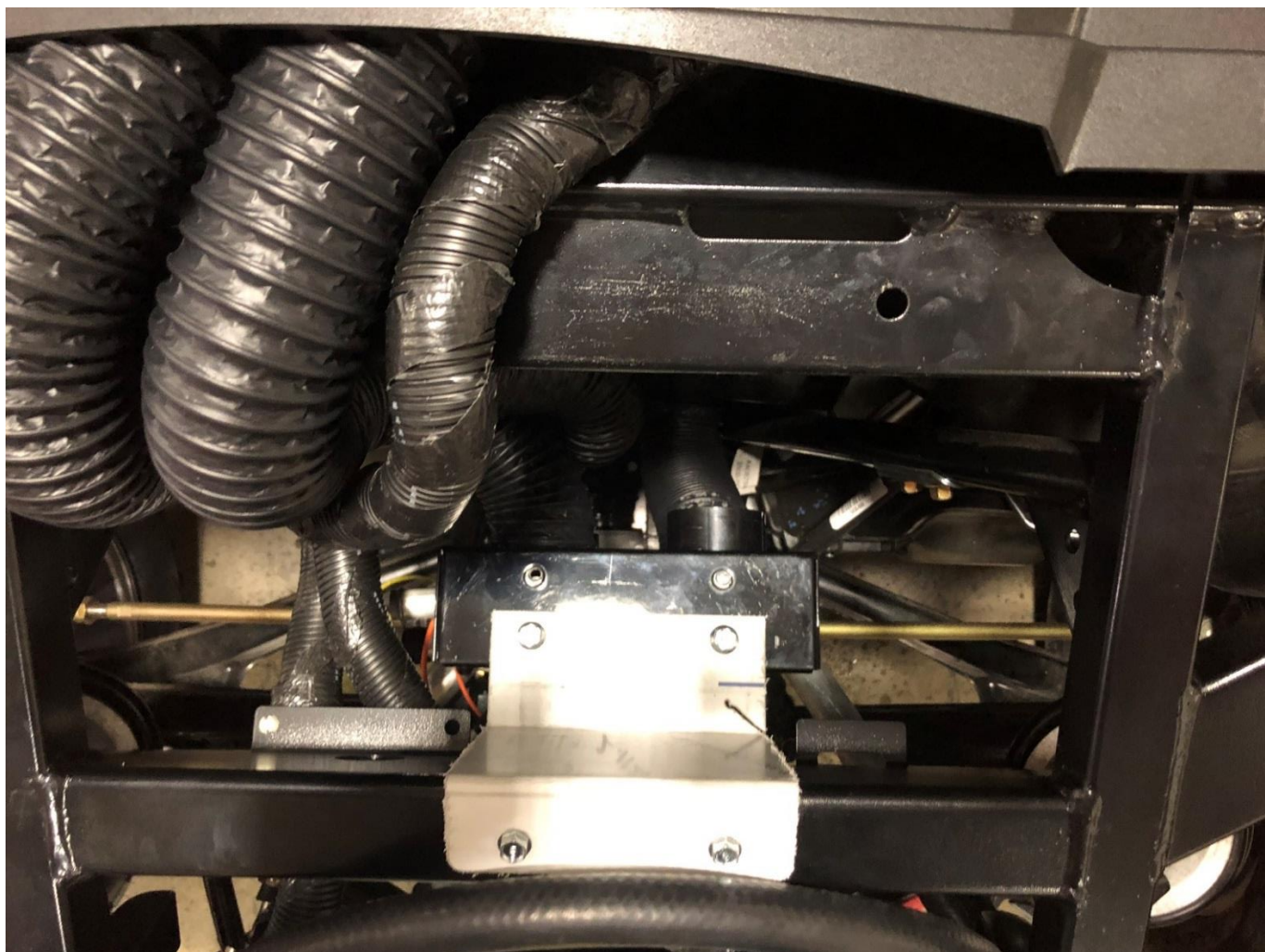
PRE-INSTALLATION

For ease of installation you will need to remove the hood cover, the middle hood panel and loosen the top dash piece so you are able to work the duct into the cab. Also, if you do not have radiator line clamps, you will need to drain the radiator (easier to install the hose splices).



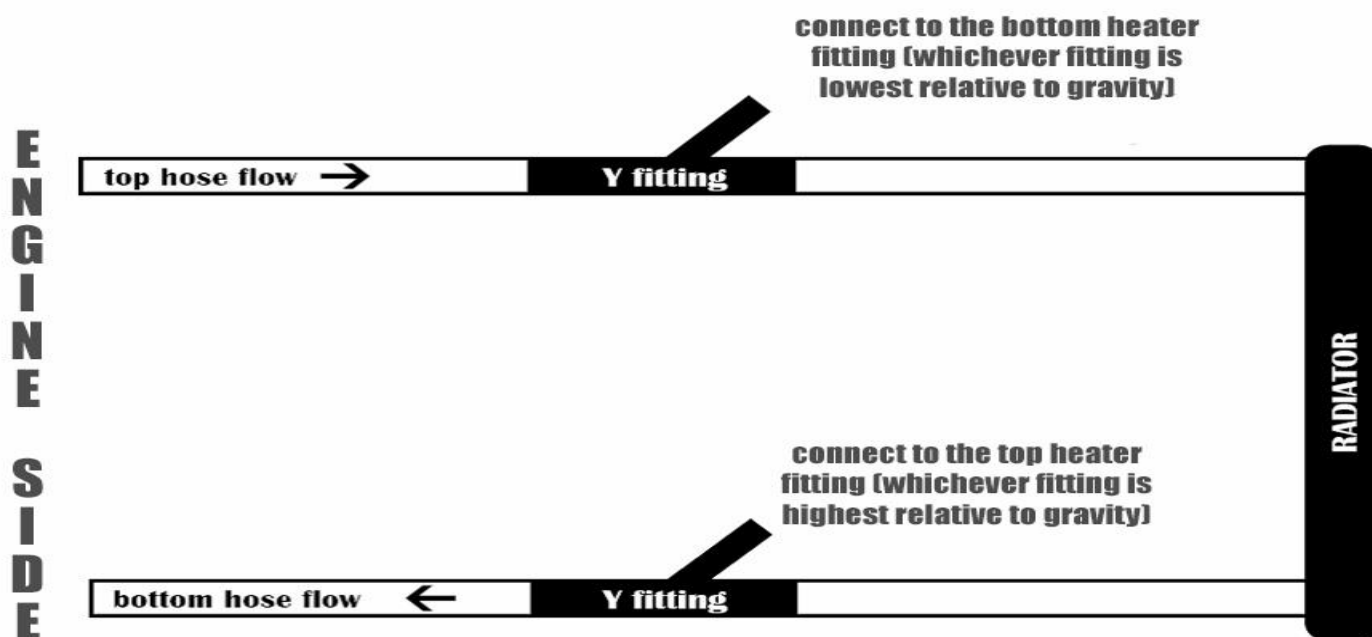
MOUNTING THE HEATER

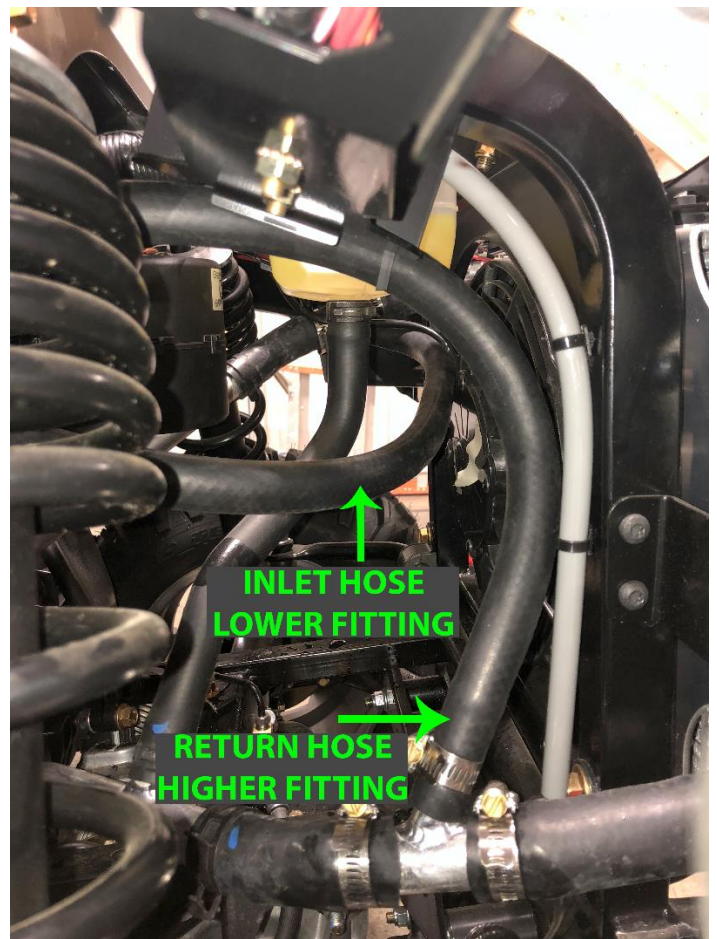
The heater will mount under the hood. You will need to deconstruct the heater box to fit it into the spot. First, take the blower wheel off the heater box with a 5/16 or #8 wrench. Then fit the heater box between the framing and into the open area (see below). With the heater box in place, put the blower wheel back on the box. Now take the smaller bracket included in the kit and install it onto the heater box as shown below. Use the self-tapping screws provided and secure to the framing as shown below. We will wait to put on the second bracket until the end of the install so you have room to install the duct work.



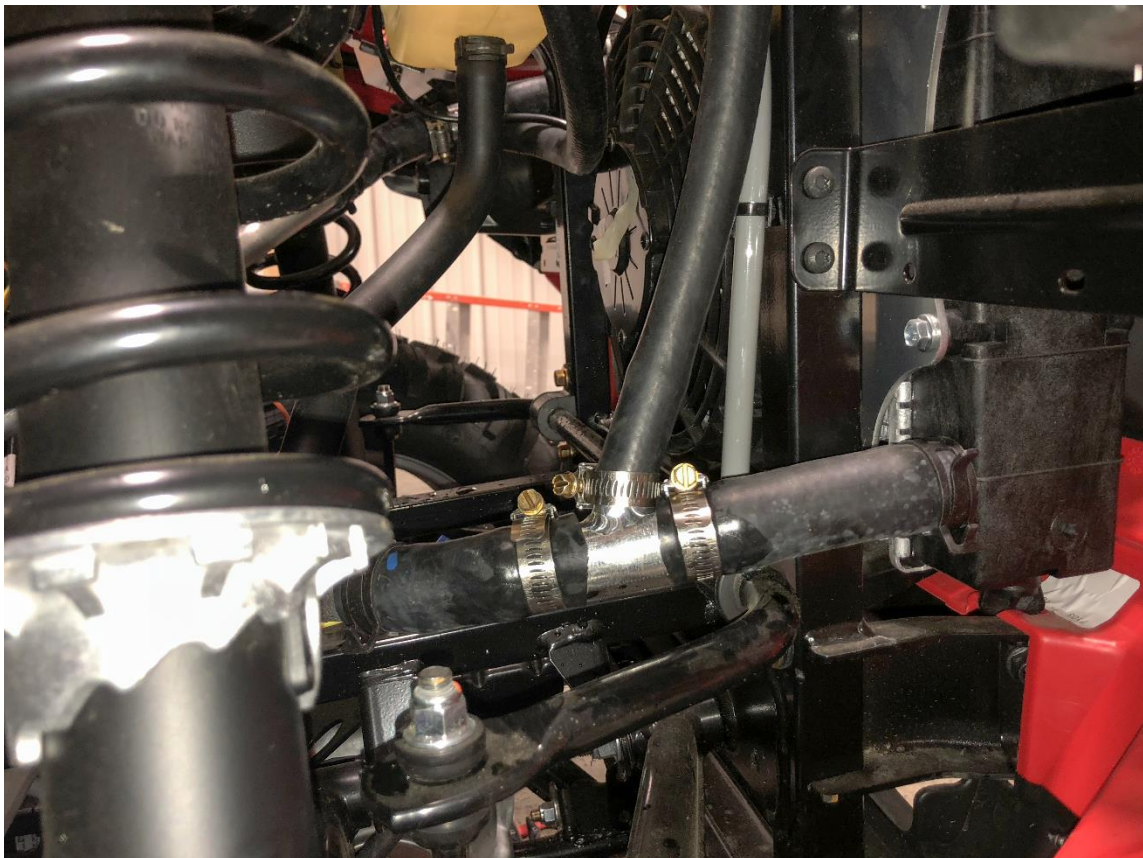
INSTALL THE Y-FITTINGS INTO THE RADIATOR LINES

With the radiator drained or using hose clamps, you can now install the Y-fittings into the lower and upper radiator hoses. With the heater hose provided cut length of 27" (inlet hose) and 24" (return hose). Note in the diagram below that you want the Y-fittings to be opening up toward the radiator.

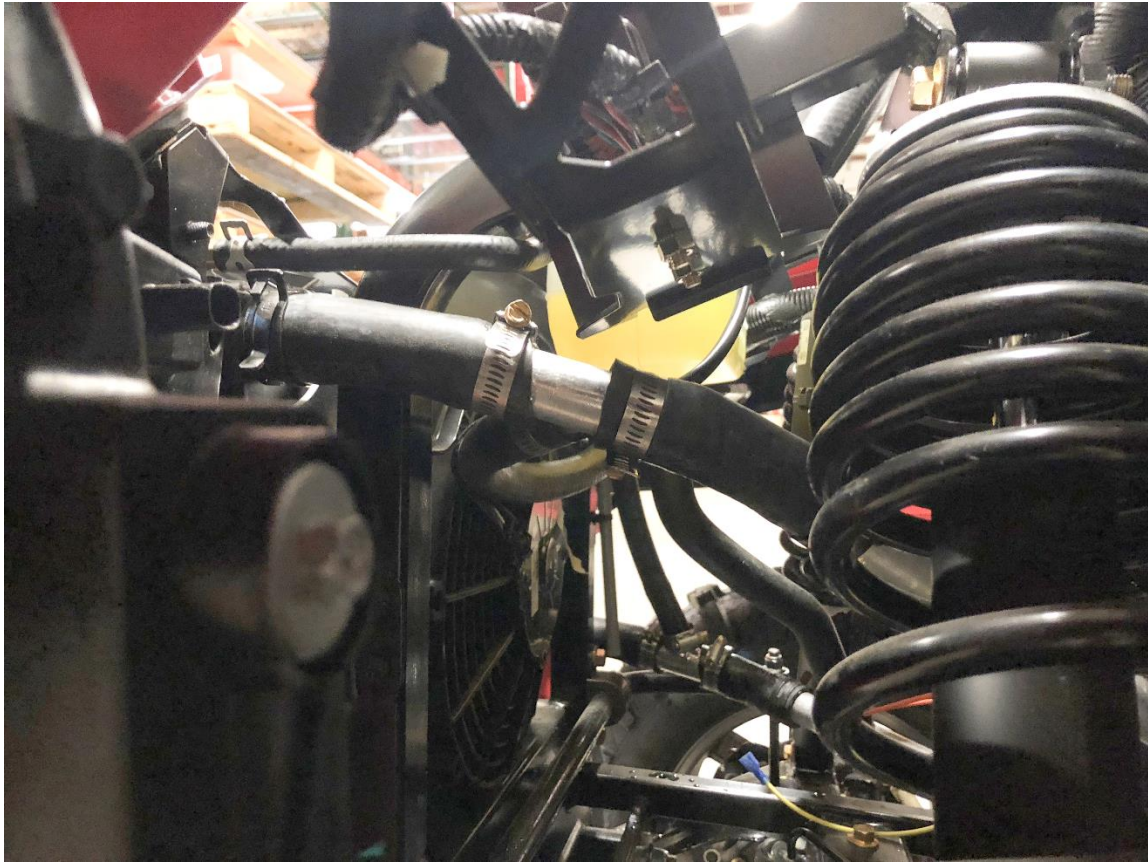




RETURN LINE FITTING (CONNECT TO HIGHEST CORE FITTING RELATIVE TO GRAVITY)



INLET LINE FITTING (CONNECT TO LOWEST CORE FITTING RELATIVE TO GRAVITY)



INSTALL LOUVERS AND RUN DUCT

A 2 1/16" hole-saw is the size of hole you need for the louvers (2" hole-saw will work as well, you just may need to use a razor blade edge to slightly enlarge hole). There are no specific locations for the louvers, we placed two floor louvers and two the dash (for defrost). See pictures below for references.

With the duct hose provided cut two lengths of 10" for the floor louvers. Mark symmetrical louver locations using a straight edge and use a 2" hole-saw to drill out louver openings. Install the floor louvers in the holes as shown below.

Connect the two runs of 10" duct to the backside adapters of these louvers. Zip ties are used to go around the duct hose after it is pushed onto the louver, use a needle nose pliers to get a tight pull on the zip tie to assure maximum hold. Now run the duct to the two lower adapters on the heater box. In the first picture in the **INSTALL THE Y-FITTINGS INTO THE RADIATOR LINES** section you can see the run of duct connecting the two floor louvers.

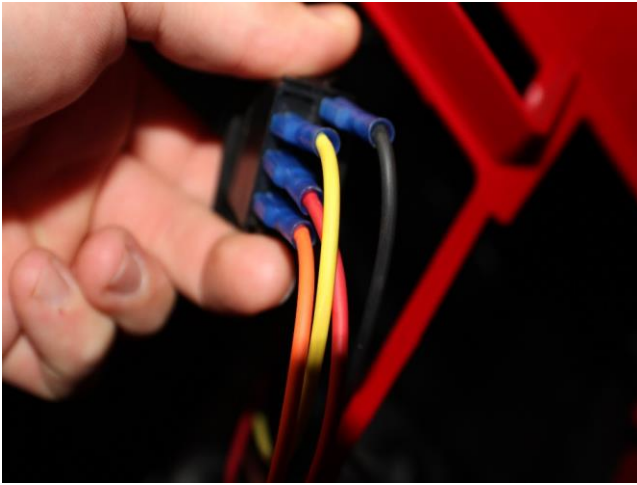
With the duct hose provided cut two lengths of 36" for the defrost louvers. Mark symmetrical louver locations in the defrost locations shown below and use a 2" hole-saw to drill out louver openings. Install the defrost louvers in the holes as shown below.

Connect the two runs of 36" duct to the backside adapters of these louvers. Zip ties are used to go around the duct hose after it is pushed onto the louver, use a needle nose pliers to get a tight pull on the zip tie to assure maximum hold. Now run the duct to the two higher adapters on the heater box.



WIRING

The black wire from the fan is grounded, the orange and yellow wires from the fan needs to be plugged into the back of the switch as shown below.

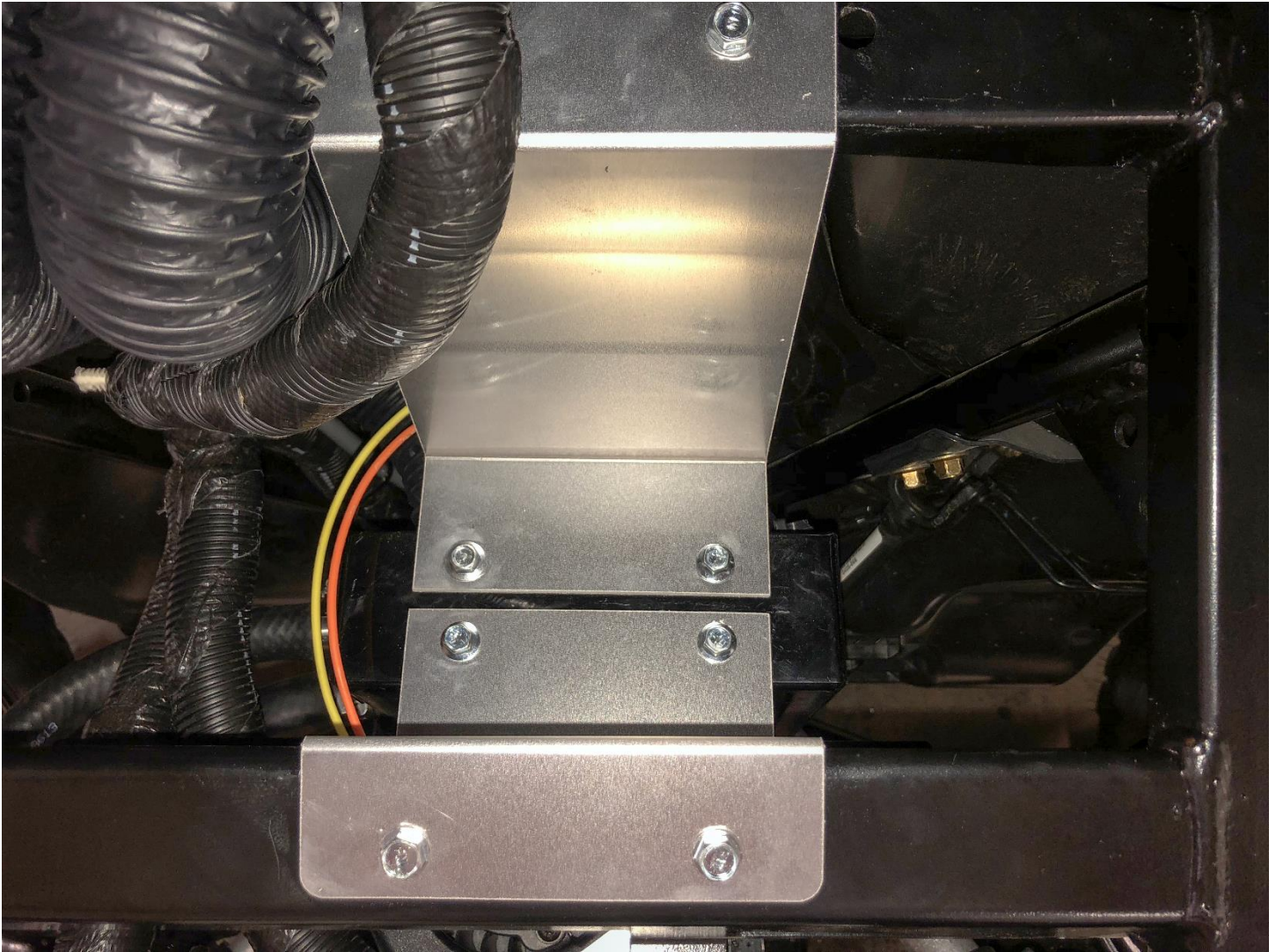


The 12v power wire is shown below. The Red and the Black connectors need to be plugged into the back of the switch as shown on the previous page and the OE 12v connector plugs into one of the open power sources located behind the dash (see picture below). At this time, make sure the heater system runs correctly. We will move on to final install and replacing the machine panels soon.



INSTALL FINAL BRACKET AND PUT ON PANELS

As shown below, use a 3/8 socket and install the second bracket to the heater box. Now take the last 2 self-tapping screws and secure it to the framing (see picture below). Now you can put the machine panels back in place and re-install the bolts and plastic rivets.



REFILL COOLANT

Last, refill the radiator for lost coolant and check for leaks. Start the machine and allow the engine to warm up and circulate the coolant, once you start getting good heat run the machine and put it under a good load. When done using, recheck coolant level and fill if needed, **make sure the radiator is cool before doing so**. It is possible you will need to run the machine and recheck fluid levels multiple times before working out all of the air.

If you have any questions please call us at 1-866-730-7169.

