

Z4620

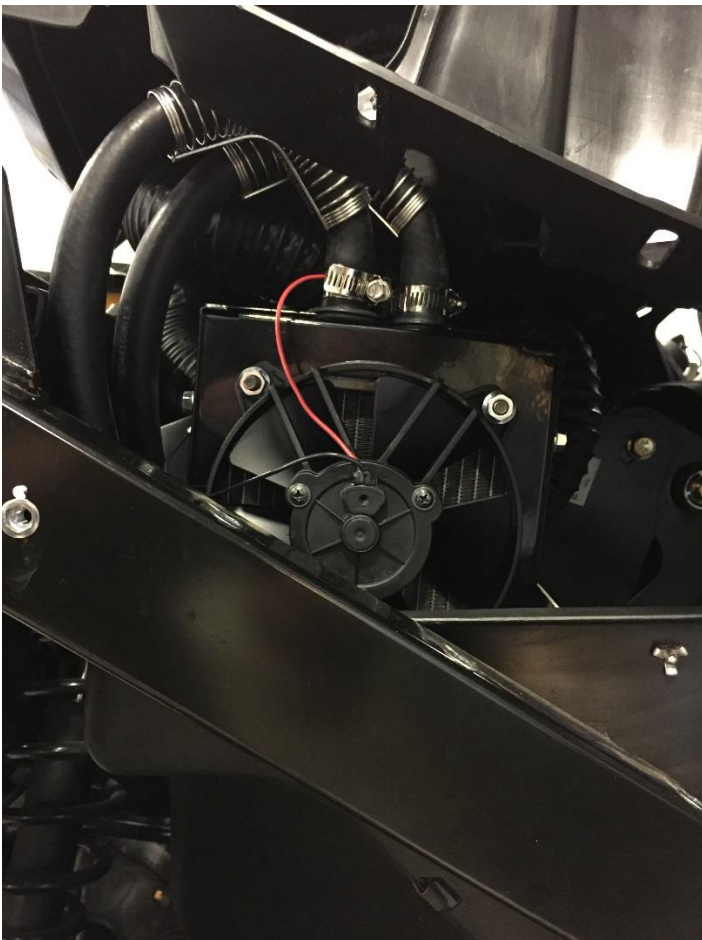
Can-Am Defender In-Dash Cab Heater

PRE-INSTALLATION

For ease of installation you will want to remove the front half of the roll cage, this makes it easier to get into the dash. Then you will want to take the dash apart so that you can mount the heater on the driver's side (see installation pictures below). Also, you will want to remove the center doghouse to install the Y-fittings and run the heater hose. Last, if you do not have line clamps for when you splice into the radiator lines, you will want to drain the radiator; this makes it a lot easier to put the hose splices (Y-fittings) in the radiator lines.

MOUNTING THE HEATER

Use the brackets provided to mount the heater. Note that the heater core inlet/outlet need to be pointed up. Also note where the hose comes out of the core, it makes a severe U-turn and this is where you will need to put the hose benders (heater hose with a built in 90-degree turn may be included instead). Connect the heater hose to the core fittings and run the hose to the radiator hoses under the center doghouse. See picture below:



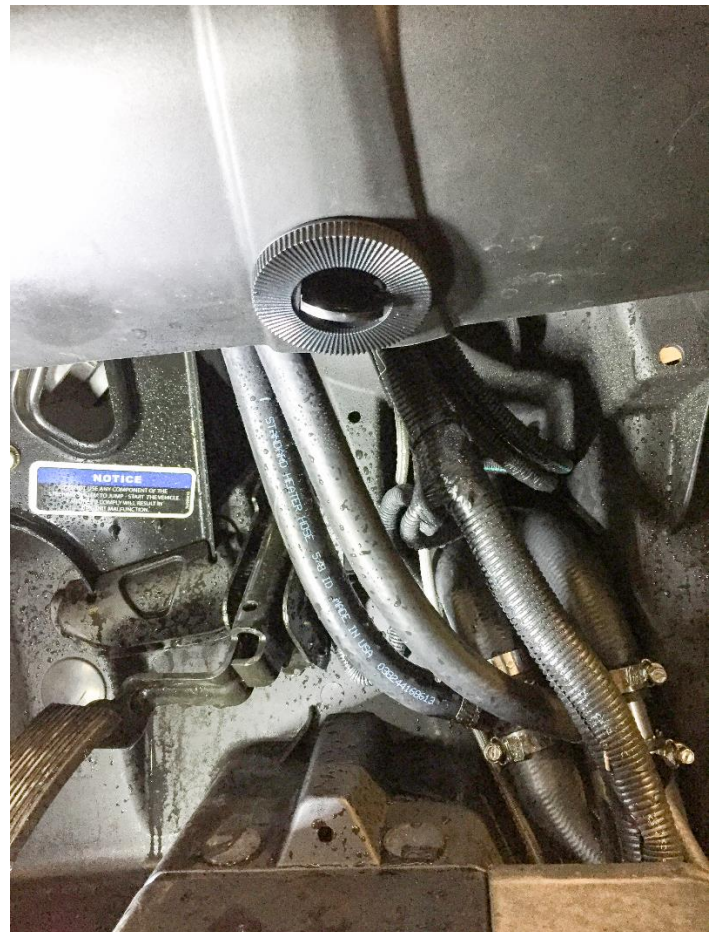
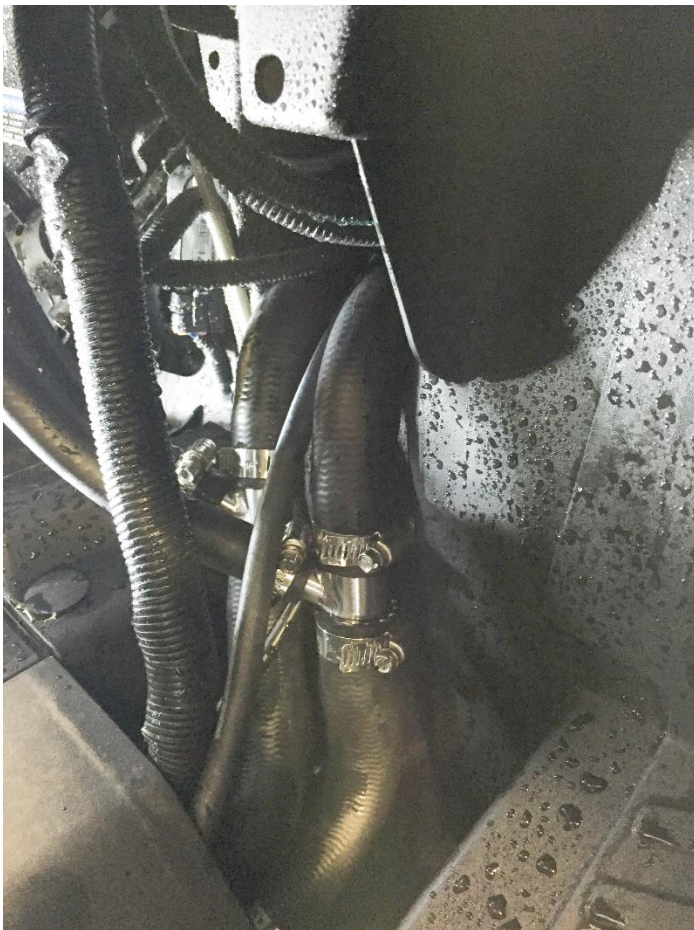
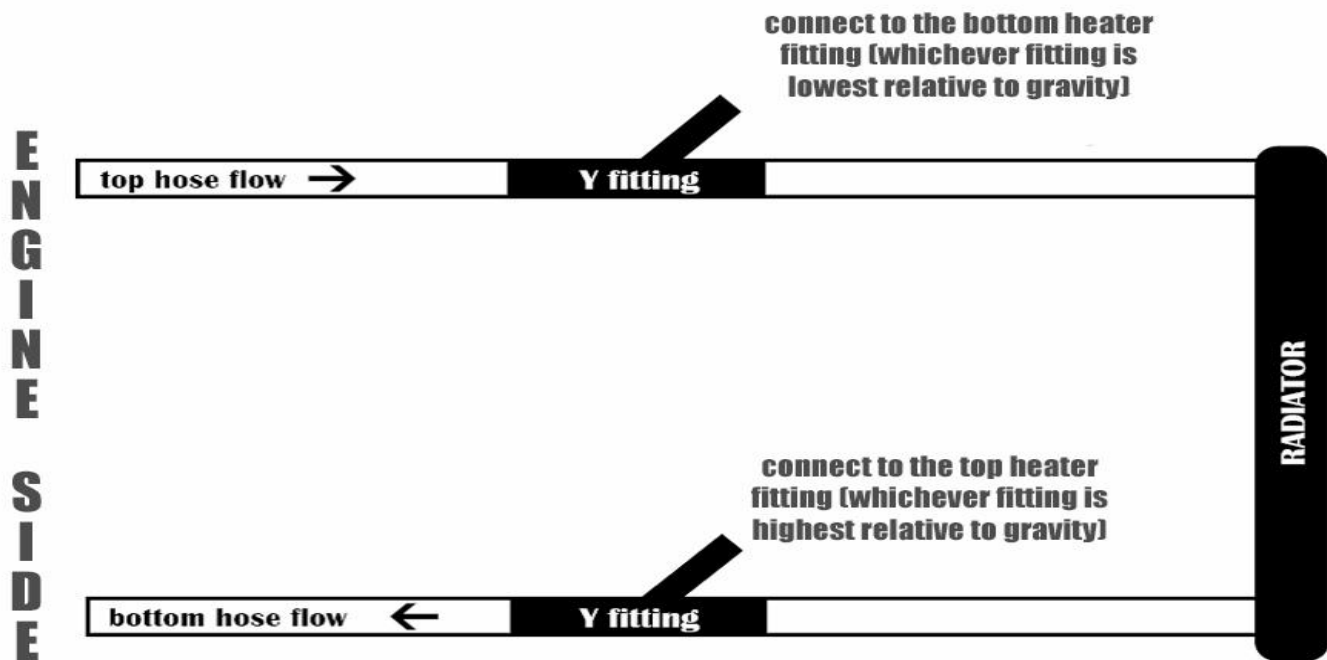
THIS PICTURE WAS TAKEN RIGHT OFF OF THE DRIVER SIDE FRAMING BAR (FROM THE OUT-SIDE OF THE MACHINE).



PICTURE TAKEN FROM DRIVER SEAT, TO THE LEFT OF THE STEERING WHEEL. REMOVE THE SMALL CUBBY FOR BETTER ACCESS.

INSTALL THE Y-FITTINGS INTO THE RADIATOR LINES

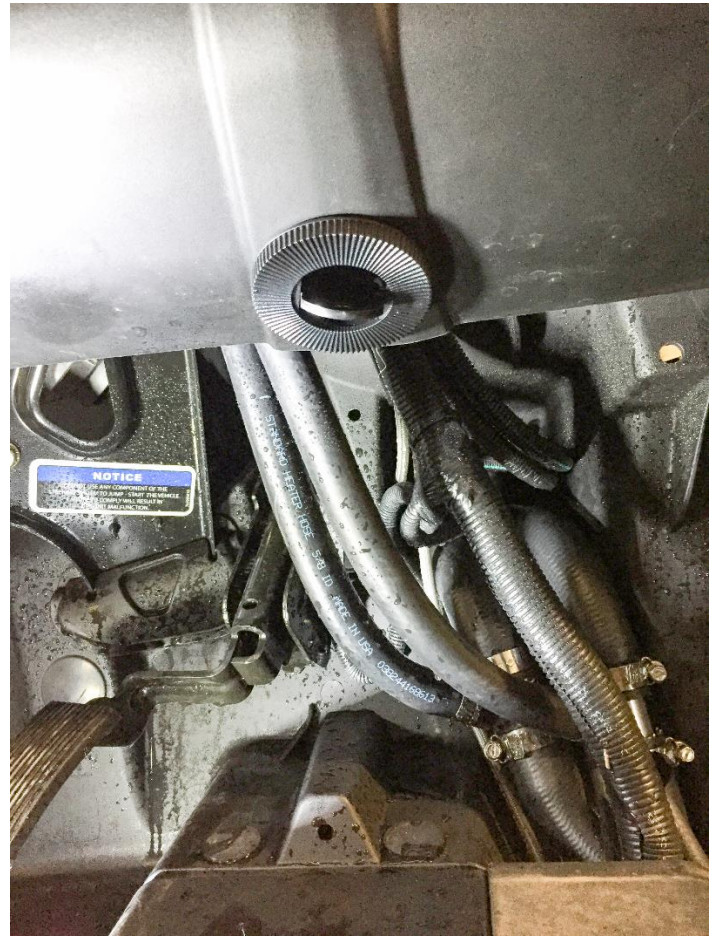
The hoses under the center doghouse are where you will install the Y-fittings. You may need to cut 1" of the rubber radiator hose to put the y-fittings in place. Make sure the when you install the y-fittings that the Y is opening up going towards the radiator (see diagram and picture below). One is needed on the top hose and one on the bottom hose. Once you have the y-fittings clamped in place, attach the heater hose from the heater to the splices and secure with the clamps.



INSTALL LOUVERS AND RUN DUCT

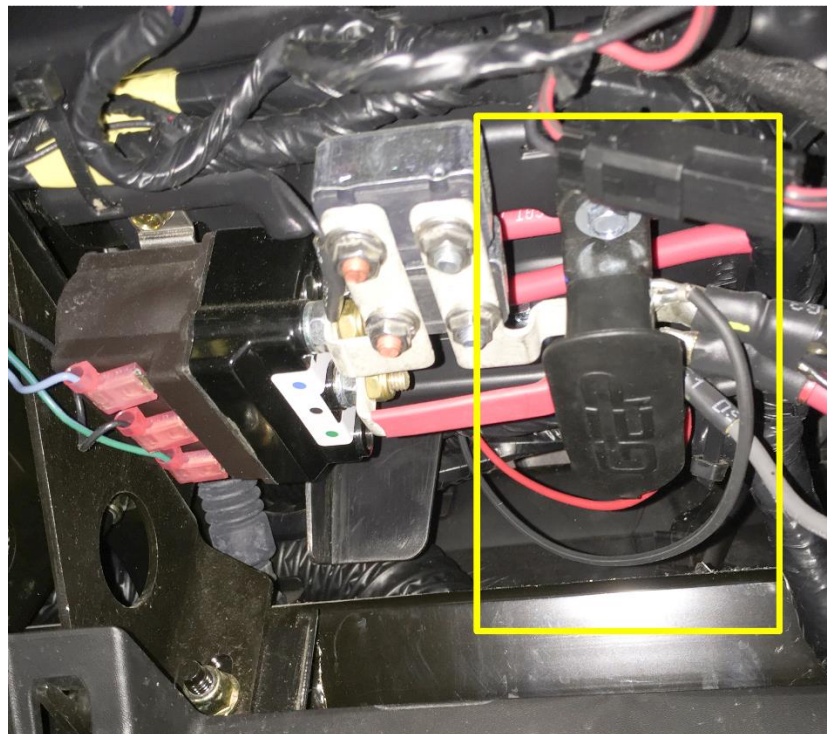
A large rectangle needs to be cut out of the dash with an air saw, utility knife, or whatever tool you find easiest to make this cut (see picture below). This is done to run 3 runs of ducts through that come from the heater box. It is also a good time to run the wiring for the switch. A 2" hole-saw is the size of hole you need for the floor louver. The louver can be placed anywhere you like, but we found there was one easy spot to install this at (see yellow circle below). The zip ties are used to go around the duct hose after it is pushed onto the louver, make sure to bear down hard on the zip tie as we want to achieve maximum tightness around the louver adapter.





WIRING

Run your ground (black) from the upper right spade (alone on right side) on the switch to the one marked GND up by the overflow tank. Run the Power wire (red) from the middle male spade on the switch to the one marked ACC by the overflow. And last run the Fan (also red) wire from the fan to the bottom male spade on the switch.



REFILL COOLANT

Now you can refill the radiator and check for leaks. Start the machine and allow the engine to warm up and circulate the coolant, once you start getting good heat run the machine. When done using, recheck coolant level and fill if needed, **make sure the radiator is cool before doing so**. It is possible you will need to run the machine and recheck fluid levels multiple times before working out all of the air.

If you have any questions please call us at 1-866-730-7169.

