

Z4905

Honda Pioneer 700 & 700-4 Direct-Fit Cab Heater

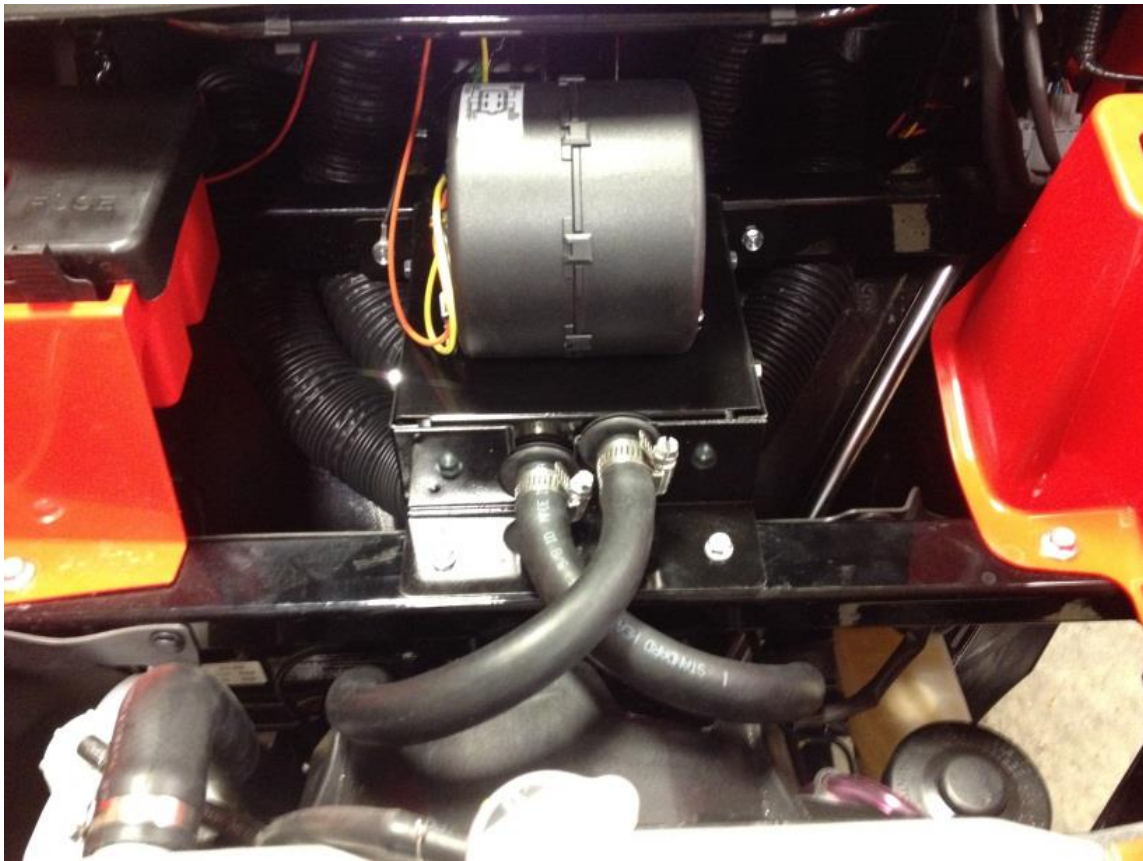
Features: 2 Speed Hi Output Blower, Blower motor has 4,000 hour Brush Life and 3 year warranty, 4 Fully Adjustable Louvers, Powder coated Steel Case

PRE-INSTALLATION

For ease of installation you will need to remove the hood and drain the radiator (easier to install the hose splices).

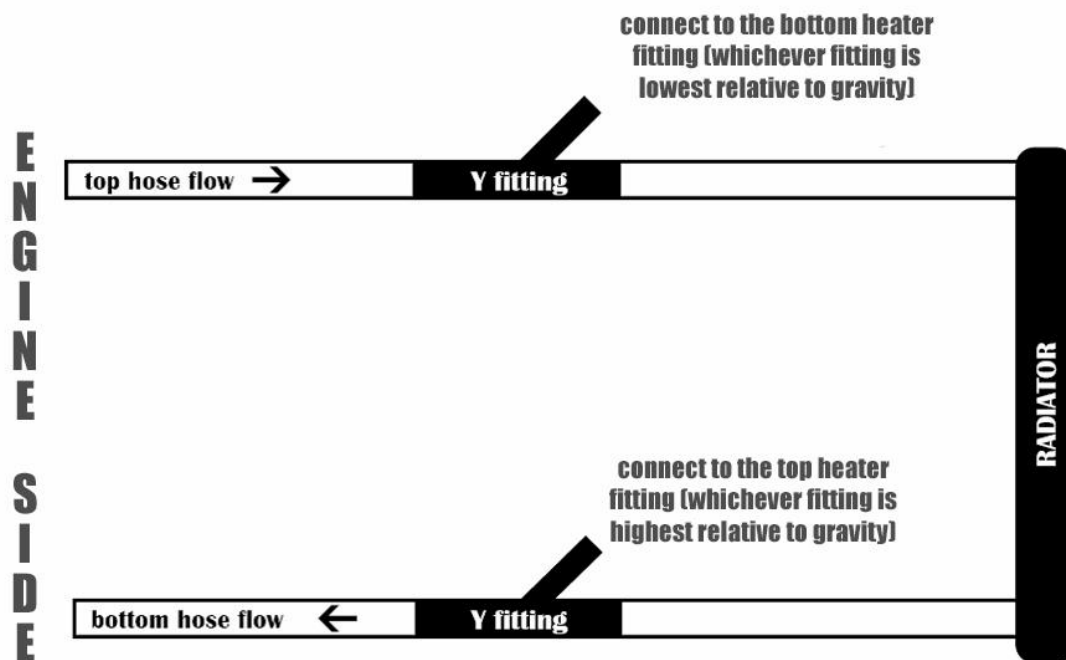
INSTALLING THE HEATER BOX

The heater mounts under the hood between the larger square cross members. Mark the 4 mounting holes and drill into the steel with a 1/8" drill bit. After the holes are drilled use the 4 self-taping screws and securely mount the bracket. You will need to mount the heater so that the duct holes are facing downward. (Make sure you ground the heater with the black wire)



INSTALL THE Y-FITTINGS INTO THE RADIATOR LINES

With the radiator drained you can now install the y-fittings into the lower and upper radiator hoses (See Photos on next page). You may need to cut off 1" of the rubber radiator hose to put the y-fittings in place. Once installed and facing the right direction (splices opening TOWARD the radiator), secure the y-fittings with the hose clamps provided. Run the heater hose from the y-fitting in the upper radiator hose to the heater core fitting that is lower than the other fitting (relative to gravity). Run the other hose from the lower radiator hose to the heater core inlet fitting that is higher than the other fitting (relative to gravity). See Y-Fitting Diagram on next page.



INSTALL LOUVERS AND RUN DUCT

You will need to remove the safety warning on the dash (Photo next page). Use a 1/8" drill bit to take out the rivets and then remove the label, there is adhesive on the back side so it needs to be worked off. Take the plate we provide and place over where the existing label was. Use the rivets provided and secure the plate (Photo next page). Use a 2.5" hole saw to drill for the louvers. You will need a utility knife to cut the square out for the switch. We drilled all four corners and found this to be beneficial.

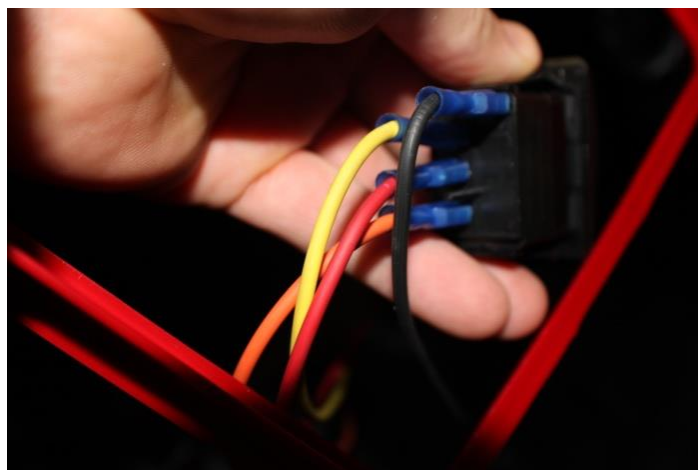
Now install the 2 floor louvers using the 2.5" hole saw, we recommend the locations in the photo below, but any location you can run duct to is acceptable. Use the zip ties to attach the duct to the louver after it has been pushed over the louver adapter; finally, attach the duct hose from the 4 louvers to the adapters on the heater.

Make sure to use a needle nose pliers and secure the zip tie as tight as you can for maximum hold on the back of the louver adapter.



WIRING

There is a yellow and orange wire that needs to go from the heater blower to the switch. See below picture on how they go onto the switch. The fused red wire can be ran to the positive side of the battery and the black can be grounded.



REFILL COOLANT

Now you can refill the radiator and check for leaks. Start the machine and allow the engine to warm up and circulate the coolant, once you start getting good heat run the machine. When done using, recheck coolant level and fill if needed, **make sure the radiator is cool before doing so**. It is possible you will need to run the machine and recheck fluid levels multiple times before working out all of the air. If you have any questions please call us at 1-866-730-7169.