

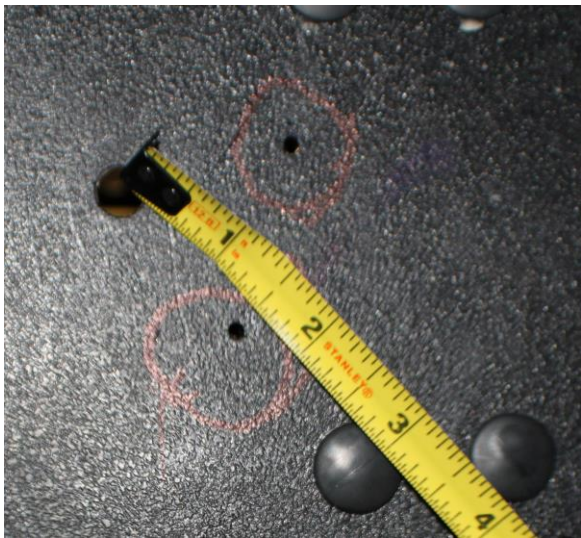
# Z4145 / Z4146

## Polaris RZR 570/800/900 Cab Heater Kit

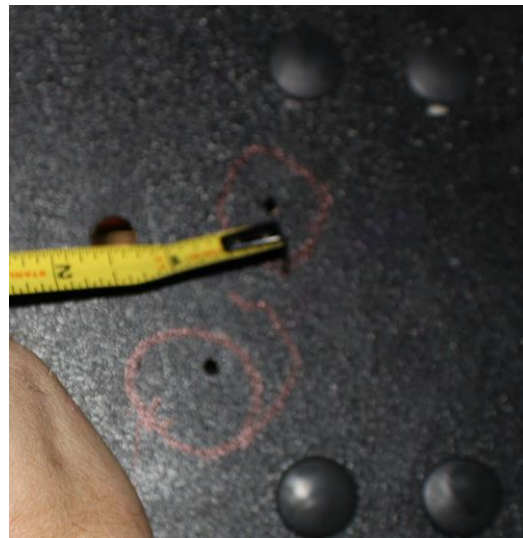
**Features:** 3-Speed High Output Blower, Fan motor has 4,000 hour Brush Life and 3 year warranty, 4 Fully Adjustable Louvers, Powder coated Steel Case (Not Plastic)

### PRE-INSTALLATION

Open the hood and remove the storage compartment, this will allow easy access for the installation. You will also need to drill two 1" holes in the firewall with a hole-saw to route the heater hose through. See below, they are both about 1 ½" from the factory hole in the firewall.



(Hole 1)



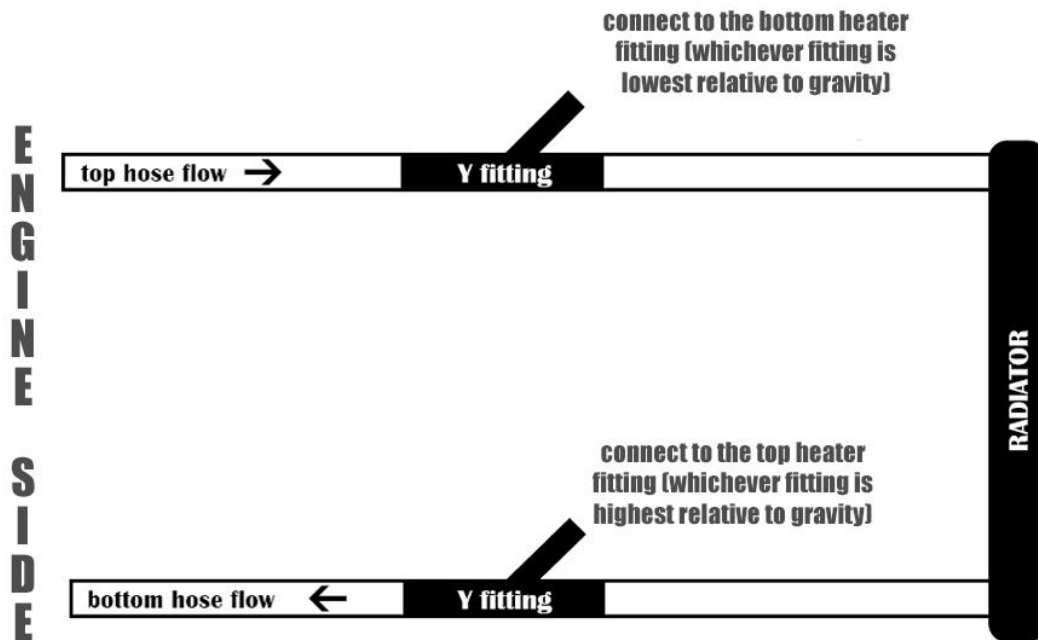
(Hole 2)

### INSTALL THE Y-FITTINGS INTO THE RADIATOR LINES

With the radiator drained or the radiator lines clamped off, you can now install the Y-Fittings into the lower and upper radiator hoses. You need to cut into the rubber radiator hose to put the Y-Fittings in place. Secure the Y-Fittings with the hose clamps provided. Make sure to install the Y-Fittings with the heater hose splices both opening up TOWARDS the radiator **See Y-Fitting Diagram on the next page.**

### INSTALL LOUVERS AND RUN DUCT

You will need a 2" hole-saw for the louvers. We include cut-out diagrams for our recommended defrost locations, but if you wish to install in different locations you can do so. Just make sure to pre-measure and mark cutouts to assure they are level before drilling. After you drill the holes out insert the louvers in the openings (See Photo on next page). Now attach the duct hose to the louver adapters and secure with one of the zip ties provided. You can let these hang as you get ready to mount the heater.



## **MOUNTING THE HEATER**

To start, attach the hose to the heater core fittings on the heater box. Once the hoses are secured to the heater core fittings the heater box can be installed. The heater hoses can be routed through the holes in the firewall. Carefully raise heater box and attach to the dash brace with the bolts provided in the kit and tighten. At this time attach the hanging duct to the heater box adapters.



## **WIRING**

Attach the power wire to the auxiliary power supply.

## **REFILL COOLANT**

Now you can refill the radiator and check for leaks. Start the machine and allow the engine to warm up and circulate the coolant, once you start getting good heat run the machine. When done using, recheck coolant level and fill if needed, **make sure the radiator is cool before doing so**. It is possible you will need to run the machine and recheck fluid levels multiple times before working out all of the air.