

Z4705

Yamaha Viking Cab Heater

Features: 2 Speed Hi Output Blower, Blower motor has 4,000 hour Brush Life and 3 year warranty, 4 Fully Adjustable Louvers, Powder coated Steel Case

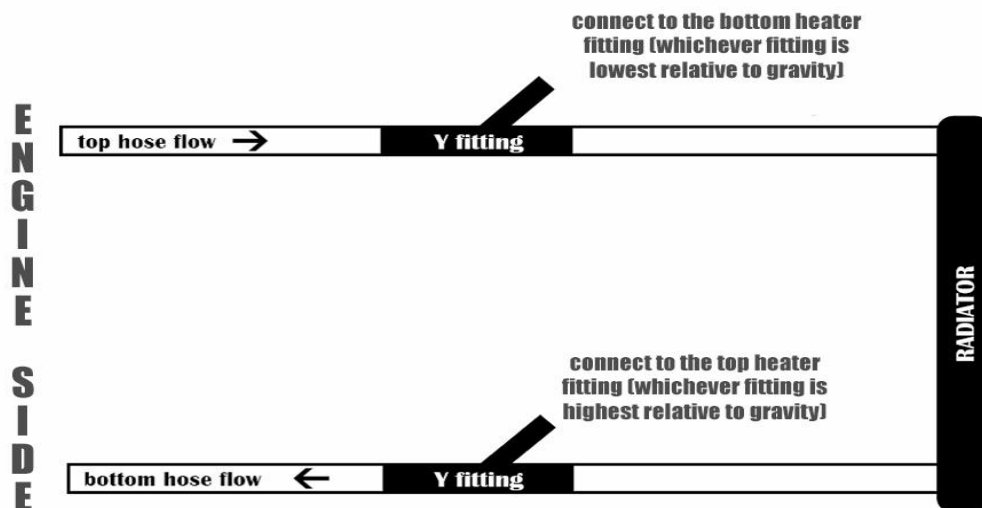
PRE-INSTALLATION

For ease of installation you will need to remove the front hood panels (see below). Also, if you do not have line clamps, you will need to drain the radiator (easier to install the hose splices).



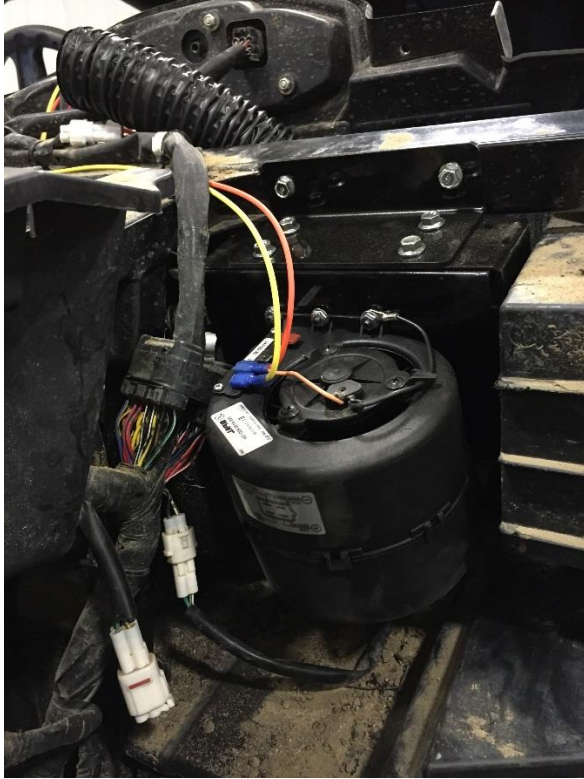
INSTALL THE Y-FITTINGS INTO THE RADIATOR LINES

With the radiator drained you can now install the y-fittings into the lower and upper radiator hoses. You need to cut off 1" of the rubber radiator hose to put the Y splices in place. Once you put the y-fittings in place and have the splices facing the right direction (toward the radiator), secure the y-fittings with the hose clamps provided. Now you can clamp the heater hose to the splices and then run them towards the area the heater will be mounted. See the diagram below:



MOUNTING THE HEATER

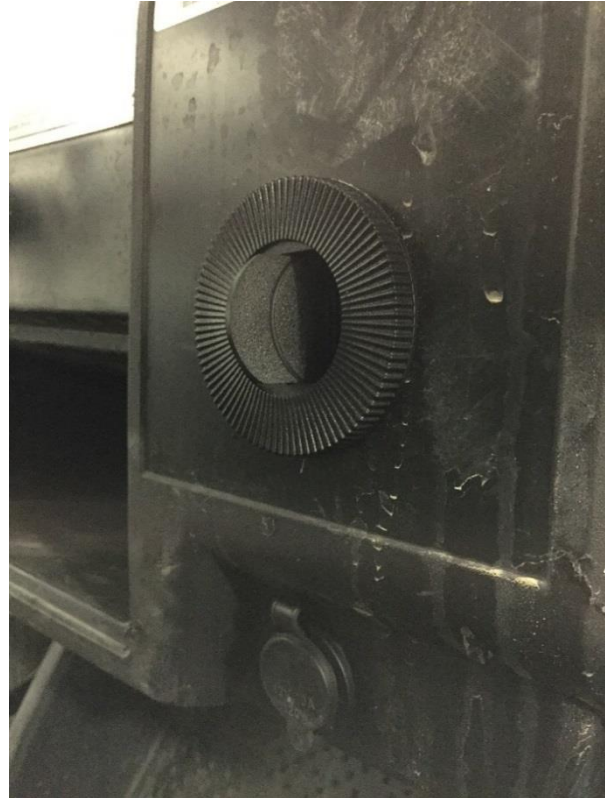
The heater is mounted up over passenger side wheel well on the 2x2 square tube that runs from drivers to passenger side. Pre-drill the locations and use the self-tapping screws supplied to secure the heater in place.



INSTALL LOUVERS AND RUN DUCT

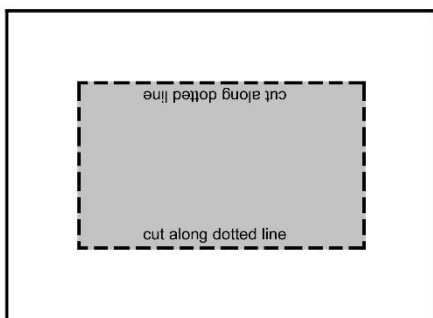
A 2" hole saw is needed to cut holes for the louvers. See the location below for the spots to place the defrost louvers. You can put the other two louvers down below to keep your feet warm (see recommended areas below). There is no specific location, just make them convenient for you to open and shut. Secure the duct to the heater adapters with the zip ties provided.





WIRING

There is a yellow and orange wire that needs to go from the heater blower to the switch. There will also be a black wire and a fused red wire. See below picture on how they go onto the switch. The switch mounts right in the switch panel, if all your switch openings are used, you will need to cut a square out with a utility knife or air saw and that is where your switch will go. Use the following cut-out:



REFILL COOLANT

Now you can refill the radiator and check for leaks. Start the machine and allow the engine to warm up and circulate the coolant, once you start getting good heat run the machine. When done using, recheck coolant level and fill if needed, **make sure the radiator is cool before doing so**. It is possible you will need to run the machine and recheck fluid levels multiple times before working out all of the air. If you have any questions please call us at 1-866-730-7169.

